



## SMART METER DEFENDER™

RADIATION PROTECTION PERFECTED

**POWERED BY GIAPLEX** GIA's proprietary, dual-action technology designed to neutralize the effects of harmful radiation, while supporting the body's resilience to stress at the same time.

**EFFECTIVE** ERT-charged, radiation-shielding mesh blocks 98%-99% of radiation emitted by your Smart Meter, while the remaining 1-2% is neutralized by GIA's patented MRET Technology.

**UNIVERSAL FIT** 7.125" diameter, rounded design fits virtually any Smart Meter type.

**EXTRA PROTECTION** Mount the (optional) mesh sheet on the indoor wall to defend against Smart Meter radiation both inside and outside your home.

**CRAFTED IN THE USA** Designed and hand-crafted in California by expert artisans using top-quality materials.



Powered by GIA's proprietary, dual-action technology designed to neutralize the effects of radiation emitted by your Smart Meter.

INSTALLATION DIRECTIONS

# SMART METER DEFENDER™

## INSTALLATION INSTRUCTIONS



GIA's Smart Meter Defender will fit the majority of Smart Meters used in North America. Please determine your Smart Meter type below and follow the corresponding instructions for installation.

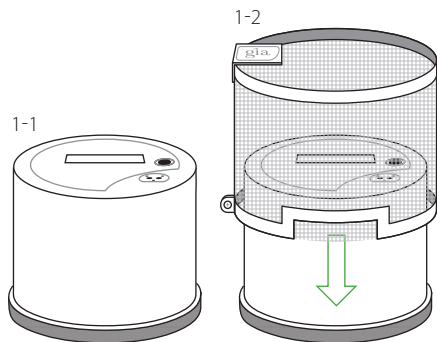
### Type-A Smart Meter

**Tools Required:** Phillips-head screwdriver, adjustable wrench

This is the most common type of Smart Meter found in North America. It has an exposed metal ring at its base and does not have a lock (fig 1-1).

1. Simply place the Defender over your Smart Meter so it sits around the metal ring located at the Smart Meter's base (fig 1-2).
2. Tighten the screw on the bottom of the Defender to secure a snug fit.

NOTE: The mesh of the Smart Meter Defender is designed to stretch a little bit. In the unlikely event that it doesn't fit over the metal ring located at the base of your Smart Meter, simply remove the screw and nut from your Defender, carefully stretch it over your Smart Meter's base, and re-install the screw and nut for a snug fit.

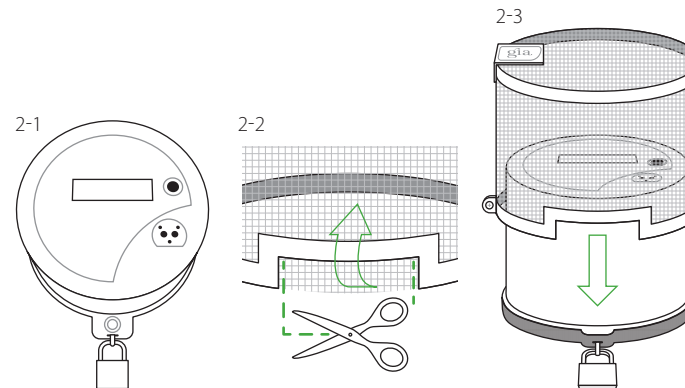


### Type-B Smart Meter

**Tools Required:** Gloves, Scissors or wire clippers, Phillips-head screwdriver, adjustable wrench

This type of Smart Meter is similar to Type-A, but has a lock attached to its base (fig 2-1). The Defender has a built-in indentation designed to fit around your Smart Meter's lock. NOTE: It's recommended that you wear gloves for step 2 below to avoid picking your fingers on sharp edges of the mesh material.

1. Find the rectangle at the base of your Defender.
2. Using a pair of scissors or wire clippers, cut the stainless steel mesh at each end of the rectangular indentation, then carefully bend the mesh upward (fig 2-2).
3. Line up the indentation on your Defender with the lock and slide it over your Smart Meter (fig 3-3).
4. Tighten the screw on the bottom of the Defender to secure a snug fit.

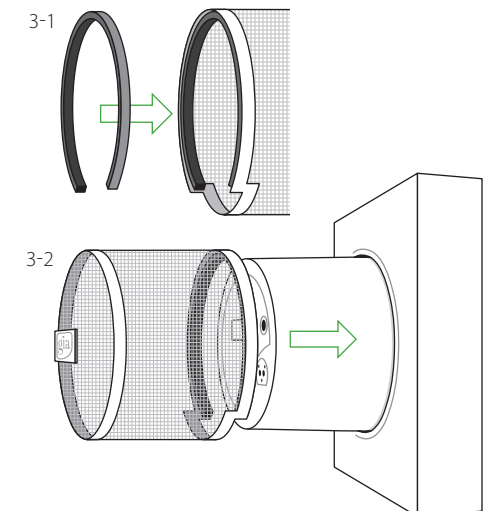


### Type-C Smart Meter

**Tools Required:** Phillips-head screwdriver, adjustable wrench

The metal ring at the base of Smart Meter Type-C is covered by the lid of the utility box. With this type, your Defender will instead cinch down around the outer glass of your Smart Meter with help from the included rubber spacer. If you do not have a Type-C Smart Meter, please responsibly discard the spacer that's included with your order.

1. Peel the paper off the adhesive side of the rubber spacer.
2. Carefully apply the adhesive side of the spacer to the inside bottom rim of your Defender (fig 3-1). NOTE: Do not attach the spacer to the outer glass of the Smart Meter. Doing so will prevent access from your electrical/utility company.
3. With the spacer now adhered, slide the Defender over your Smart Meter until it is virtually flush with the lid of the utility box. NOTE: It is not necessary for the Defender to be 100% flush or to be actually touching the utility box lid (fig 3-2).
4. Tighten the screw on the bottom of your Defender to secure a snug fit. To avoid damaging the glass on your Smart Meter, be careful not to over tighten.



### Questions?

Please call GIA's friendly VIP Consultant Support at (760) 448 2498 or email us at [support@giawellness.com](mailto:support@giawellness.com).